



Wominjeka

WESTGROVE PRIMARY SCHOOL NEWSLETTER

Thames Boulevard, Werribee 3030
 Email: westgrove.ps@education.vic.gov.au
 Phone: (03) 9749 8233

CALENDAR OF EVENTS – IMPORTANT DATES

Term 2, 2022

Monday 10 th May – Monday 16 th May	NAPLAN – Years 3 & 5
Wednesday 18 th May	Vaccination Clinic – 2 nd dose
Each Monday this term	Year 2 Swimming
Each Friday this term	Year 4 Swimming

A MESSAGE FROM THE PRINCIPAL TEAM

Chris Gatt, Kerrie Slaymaker & Susan Richardson

Staffing Update

Next Friday (13th May) Marium our School Counsellor will commence family leave as she awaits the arrival of her first child. Marium is being replaced by Renae Strand, who comes to us with a wealth of knowledge and experience in the field. Renae will be working with us two days per week.

This term we farewell Lauren Luttick and Elisha Schafer who have gained ES positions at new schools. Lauren will be moving to Riverwalk PS and Elisha will be moving to Truganina P-9 College. We thank them for their continued dedication and championing of our students and wish them well on their new ventures.

NAPLAN

The National Assessment Program – Literacy and Numeracy (NAPLAN) is an annual assessment for students in Year 3 and Year 5. As per previous years, the tests will include Language Conventions, Reading, Writing and Numeracy. In 2022 NAPLAN testing will be online (except for Year 3 Writing). and will be delivered at various times from Tuesday 10th May to Monday 16th May.

Please do not keep your child at home on these days unless they are unwell, as this will impact on your child's attendance. The tests will only take up small parts of each day, and regular learning and curriculum will take place between the sessions of testing.

Grievance Process

Westgrove Primary School is always happy to discuss with parents/carers and community members any concerns that they may have. Concerns in the first instance should be directed to your child's class teacher.

Westgrove Primary School is a safe, inclusive and supportive community that empowers our students with the tools to reach their individual potential.

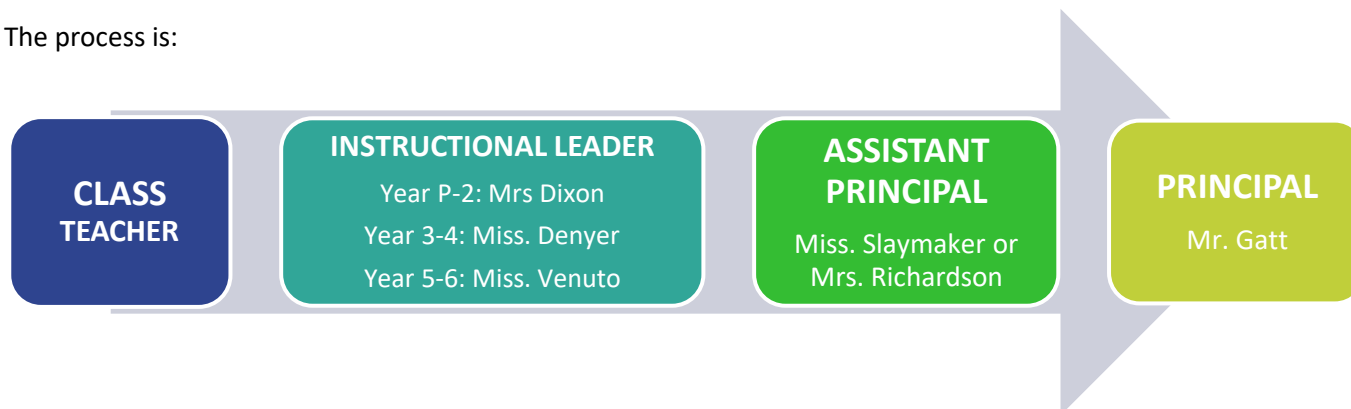


Wominjeka

WESTGROVE PRIMARY SCHOOL NEWSLETTER

Thames Boulevard, Werribee 3030
 Email: westgrove.ps@education.vic.gov.au
 Phone: (03) 9749 8233

The process is:



2022 Annual Implementation Plan Targets

As mentioned earlier in the year our school priorities for 2022 are Mathematics and Student Attendance. Here are the targets we have set out for 2022.

ANZAC Day Service – 26th April 2022

On Tuesday 26th April our community commemorated those who served our country. Students gathered in our courtyard and partook in a belated ANZAC Service organised by Mrs. Warton and led by our school leaders.

Weekly Assemblies

This term we have commenced having our whole school assemblies on a Friday afternoon in the gym, with our first one being last Friday. At this stage, we *are not* inviting parents and carers to attend as our students and staff just fit in the gym. We ask for your patience as we work through what assemblies will look like in the future!

Mothers Day Stall

On Thursday 5th May we had our Mother's Day stall. A big thank you goes out to all our volunteers who assisted as without you the stall would not have run as smoothly as it did! We hope you enjoy celebrating your mums and mum like figures on Sunday!

Applications for Year 7 in 2023

WESTGROVE PRIMARY SCHOOL

2022 Annual Implementation Plan

Westgrove Primary School is a safe, inclusive and supportive community that empowers students with the tools to reach their individual potential.

Teaching & Learning Priority

Mathematics

Increase the overall % of students at or above level against the Victorian Curriculum in Number and Algebra from 77% to 85%.

Increase the overall % of students in Years 1-6 at or above level (Stanine 4+) in PAT Mathematics from 82% to 92%.

-
+
x
%

Wellbeing Priority

Attendance

Reduce the number of student absent days of 20 or more days from 30% to 20%.

Reduce the number of unapproved absences from an average of 12.8 days to 8 days.

Refer to the complete AIP for the actions we will undertake in 2022 to support these targets.

Westgrove Primary School is a safe, inclusive and supportive community that empowers our students with the tools to reach their individual potential.



Wominjeka

WESTGROVE PRIMARY SCHOOL NEWSLETTER

Thames Boulevard, Werribee 3030
 Email: westgrove.ps@education.vic.gov.au
 Phone: (03) 9749 8233

The Application for Year 7 Placement form and supporting information has been sent home with all current Year 6 students. Please ensure that these forms are returned to the front office as soon as possible, so as to secure a placement and ensure a smooth transition between schools. Miss. Venuto is the key contact should you have any specific questions regarding the application process.

Holiday Works

Over the holidays there were a number of maintenance and minor works occurring around the school. This included asphalt repairs, some of the remediation works required to some of our buildings, the painting of our BER building and the installation of a new gate beside the Art Room and Indigenous Garden. The installation of this gate has ensured that our school grounds are secure throughout the school day.



'Drop off' and 'Pick up' Reminder

A reminder to all families that when dropping off or collecting your child/ren from school, please ensure that this is being done in a safe manner. This includes ensuring that vehicles are parked appropriately, etc. **Children are not to be getting out of the car when stopped at the crossing.**

School Uniforms

The weather has begun to turn cool. Children should now be bringing a jacket for recess breaks in case they need it outside. Please check that you have school windcheaters and/or jackets and long pants for the coming weeks to ensure that your child is warm at school. Please contact the office if you need uniform assistance.

Just a reminder that coloured leggings and coloured long-sleeved tops under short sleeves are not suitable uniform items. If a student requires leggings under a school dress, for example, they should be navy blue in colour.

Breakfast Club

Breakfast Club is back after a holiday break! We have our Year 5 volunteers serving healthy food and drinks from the canteen every Tuesday and Thursday morning before school starts.

Swimming Programs

After a very long wait, swimming programs have recommenced at our pool. The Year 2 and Year 4 students have begun their programs this term and the children have been very excited to get back into the pool. Notes will be distributed to Year Prep, Year 1 and Year 3 students shortly for the term 3 programs.

TEACHING AND LEARNING UPDATE

Take Home Reading – Book Chat

Take Home Reading has started for Term 2, these books should be easy for your child to read independently to build their confidence. This time should be enjoyable so you may choose to read the book for your child to give them the opportunity to hear the book and gain an understanding of the text prior to them reading it themselves.

Westgrove Primary School is a safe, inclusive and supportive community that empowers our students with the tools to reach their individual potential.

*Wominjeka*

WESTGROVE PRIMARY SCHOOL NEWSLETTER

Thames Boulevard, Werribee 3030
Email: westgrove.ps@education.vic.gov.au
Phone: (03) 9749 8233

Discussing the content and meaning of books is an important part of reading. Chat about the book before, during and after reading, and encourage your child to share their ideas and to ask questions about the book.

Here are **some** questions you can ask before, during and after reading the book:

- Look at the cover. What do you think this book might be about?
- How would you describe the character at the beginning of the story?
- What is happening in the pictures?
- What do you think is going to happen next?
- Why might a character have done this? What would you do in the same situation?
- Who was your favourite character in the story? Why did you like that character?
- What was your favourite part of the book?
- Can you retell the story in your own words?

Mathematics Speed?

Parents play an important part in ensuring their children build a positive, growth mindset towards Mathematics and that they see themselves as a 'Maths Person.' Never associate Maths with speed. It is not important to work quickly on problems. Forcing kids to work quickly on Maths can start Maths Anxiety for children. Give your children the time they need to process and talk through maths questions and challenges. Instead try to play games or undertake visual activities.

Follow this link for an example of how you can use a deck of cards at home to play a game that involves having fun with Maths: [Addition Activity - WAR! | Learn at Home with Mrs. Jones](#)

ENGAGEMENT AND WELLBEING UPDATE

We hope you all had a refreshing and restful break during the term holidays. The students have returned to school with energy and enthusiasm which has been lovely to see.

Better Buddies

Our Year 4 and Year Prep buddies have been getting to know each other throughout term 1 and will continue to work together in term 2 to promote positive behaviours and relationships.

Student Attitudes To School Survey

All Year 4,5 and 6 students had an opportunity to complete a short Attitudes to School survey in term 1. This data has been collated and will now be used to inform some further initiatives to support student wellbeing, positive behaviour and attitudes.

Westgrove Primary School is a safe, inclusive and supportive community that empowers our students with the tools to reach their individual potential.



Wominjeka

WESTGROVE PRIMARY SCHOOL NEWSLETTER

Thames Boulevard, Werribee 3030
 Email: westgrove.ps@education.vic.gov.au
 Phone: (03) 9749 8233

EVERY DAY COUNTS!

BEING AWAY FROM SCHOOL FOR ONE DAY A FORTNIGHT EQUALS MISSING 1.5 YEARS OVER 13 YEARS OF SCHOOL

Going to school every day is the single most important part of your child's education. Students learn new things at school every day – missing school puts them behind.

Why it's important

We all want our students to get a great education, and the building blocks for a great education begin with students coming to school each and every day.

If students miss school regularly, they miss out on learning the fundamental skills that will set them up for success in the later years of school.

There is no safe number of days for missing school – each day a student misses puts them behind, and can affect their educational outcomes.

Each missed day is associated with progressively lower achievement in numeracy, writing and reading.

If your child is away for any reason it is important that you inform the school. Record your child's absence on Compass.

Remember, every day counts. If your child must miss school, speak with your classroom teacher as early as possible. Openly communicating with your child's school about all absences is a good way to prevent attendance issues being escalated to a School Attendance Officer. A School Attendance Officer is a Department of Education and Training Regional Director who has authority to follow up attendance issues. Chronic or ongoing attendance issues that are escalated can lead to an Infringement Notice being issued to parent/s.

If you're having attendance issues with your child, please let your classroom teacher know so we can work together to get your child to school every day.

Top attendance tips for parents

- Schools want to work in partnership with parents – act early if you have any concerns by contacting your child's school and asking for advice and support
- Remember that every day counts
- There is no safe number of days for missing school – each day a student misses puts them behind, and can affect their educational outcomes and their social connectedness
- Talk positively about school and the importance of attending every day
- Open and prompt communication with your child's school about all absences is a good idea

SCHOOL ATTENDANCE IS EVERYONE'S BUSINESS

EVERY CHILD DESERVES AN EDUCATION

YOUR CHILDREN NEED YOUR HELP TO DO WELL AT SCHOOL. YOU CAN HELP BY:

- Ensuring children get a good night's sleep and get ready for school in the morning
- Getting children to school every day
- Asking questions to find what your child likes about school
- Talking about going to school every day and how it helps children reach their dreams.
- Talking about how school can be fun

EVERY DAY THEY MISS ADDS UP!

Skip 1 day a week Miss 3 Years	Skip 2 days a week Miss 5 Years	Skip 3 days a week Miss 7 Years	Skip 4 days a week Miss 10 Years	Skip 5 days a week Miss 12 Years
-----------------------------------	------------------------------------	------------------------------------	-------------------------------------	-------------------------------------

Westgrove Primary School is a safe, inclusive and supportive community that empowers our students with the tools to reach their individual potential.

*Wominjeka*

WESTGROVE PRIMARY SCHOOL NEWSLETTER

Thames Boulevard, Werribee 3030
Email: westgrove.ps@education.vic.gov.au
Phone: (03) 9749 8233

- Avoid making routine medical and dental appointments during the school day or planning family holidays during the term
- Seek help from your school if you are concerned about your child's attendance and wellbeing. Schools want to work in partnership with parents to support student attendance and wellbeing.

OFFICE NEWS

COVID-19 Vaccination Clinic

We are pleased to announce that we will be hosting a Pop Up COVID-19 Vaccination Clinic by Port Melbourne Medical here at school! This clinic will be available to our students, their parents and extended family and our staff. The clinic will be open on **Wednesday 18th May 2022**, from **12.30pm - 4.30pm**. In order to make a booking for you, your child or extended family, please contact the office on 9749 8233.

You will be able to collect your child earlier on the day for their vaccination, if you are choosing to have them vaccinated. Under no circumstance will school staff be taking children over to the vaccination clinic, this is solely a parent responsibility.

Prep Winter Uniform Packages

Families who are in receipt of the CSEF (holder of a valid Health Care Card), have had an opportunity to order some free uniform items for current Prep students. Those families who have already returned their order have had their items delivered to students in the last few days. Orders are still open for eligible families.

Office space refit

This week we are having new furniture installed for the Administration office, where Di, Tracey and Tina work. Therefore, we request your patience during this time while this is occurring.

Prep enrolments 2023

We are currently taking Prep enrolments for 2023. Please contact the office for an enrolment form. We will require the following to complete the enrolment:

- Birth Certificate or Passport
- Visa documentation (if applicable)
- Immunisation records
- Court orders/Custody orders (if applicable)
- Wellbeing information (if applicable)
- Student medical needs (if applicable, asthma plan, anaphylaxis etc.)

WHAT'S HAPPENING IN WYNDHAM?

Westgrove Primary School is a safe, inclusive and supportive community that empowers our students with the tools to reach their individual potential.



Wominjeka

WESTGROVE PRIMARY SCHOOL NEWSLETTER

Thames Boulevard, Werribee 3030
 Email: westgrove.ps@education.vic.gov.au
 Phone: (03) 9749 8233

Information Sessions/ Courses At QB

The community centre next to school, Quantin Binnah (QB) hold various sessions and courses for parents and families, which are often free. This information is circulated via COMPASS and Class DOJO so keep an eye out for these as they are very valuable opportunities to learn some new skills or make connections with other members of the community.

Wyndham Libraries

Our local libraries are not just places full of books. They are a wonderful place to go for a wide range of activities (most of them free) for children, youths and adults. The link below gives you information about activities that they run such as:

- Competitions, including writing and photography
- Dance classes
- Gaming
- Lego club
- Author talks

<https://www.wyndham.vic.gov.au/services/libraries>

DANCHELLE SCHOOL OF DANCE



Classes Held in School Gym

**First class free for all new
Enrolments that attend
Westgrove Primary**

**Professional Tuition in
Tap Classical Ballet and
Acro Gymnastics**

For Boys and Girls from 3yrs to Adults

Affordable Classes

No Term fees or costume making

We are now taking enrolments for term 2

For all enrolments and enquiries

PHONE : 0438 699 125 or Message our page



**WYNDHAM
VOLUNTEER
Expo**

**SATURDAY
14 MAY, 2022**
 ANYTIME BETWEEN 10AM – 2PM

Encore Event Centre
 80 Derrimut Rd, Hoppers Crossing

wyndham city coast country
 Wyndham Volunteers

Westgrove Primary School is a safe, inclusive and supportive community that empowers our students with the tools to reach their individual potential.

RESPECT • EMPATHY • HONESTY • PERSEVERANCE • INCLUSIVITY • RESILIENCE • COLLABORATION