



Wominjeka

WESTGROVE PRIMARY SCHOOL NEWSLETTER

Thames Boulevard, Werribee 3030
 Email: westgrove.ps@education.vic.gov.au
 Phone: (03) 9749 8233

CALENDAR OF EVENTS – IMPORTANT DATES

Term 1, 2023

Monday 13 th February	Preps commence full time
Tuesday 21 st to Friday 24 th February	Year 6 Camp

A MESSAGE FROM THE PRINCIPAL TEAM

Chris Gatt, Kerrie Slaymaker & Susan Richardson

It is with great pleasure that I welcome all our children, families and staff, back to school. And a special welcome to all our new families who have joined our community. I hope you all had a nice break and everyone is ready for the new school year.

What a positive and settled start it has been to 2023! We are immensely proud of how all our children have settled back into school and began connecting with their new teachers and peers. All students are currently learning our school routines, values and expectations and familiarising themselves with the classroom environment.

Our new prep children have started into their schooling journey extremely successfully. They are proudly and independently saying 'goodbye' at the gate in the morning and make their way to their classrooms and are ready to learn.

New Staff in 2023

This year we welcomed the following staff (new and returning) to Westgrove.

- Nadia Segovia (Grade 1)
- Sally Jones (Grade 1)
- Isobelle Dobai (Grade 2)
- John Smith-Herrod (Grade 3)
- Danel Heyns (Grade 4)
- Jessica Moore (Grade 5)
- Mick Armstrong (PE)
- Adrian Bate (PE/ Grade 2)
- Ceridwyn Gordon (Performing Arts)
- Timothy Turner (STEM)
- Nathan Wade (Educational Support)

2023 Dates For Your Calendar

Our Curriculum Days for 2023 are as follows:

- Friday 12th May 2023
- Monday 10th July 2023
- Monday 6th November 2023

We are yet to nominate our common Professional Practice Day for 2023. Once this is decided and agreed at School Council, we will communicate this with the community.

Please note – on the above days children DO NOT attend school. Quantin Binnah (QB) will be running a program on each of those days, should you need care for your child/ren.

Westgrove Primary School is a safe, inclusive and supportive community that empowers our students with the tools to reach their individual potential.



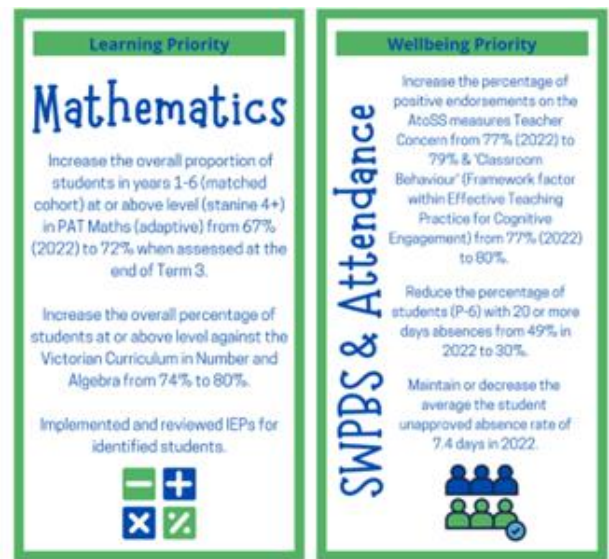
Wominjeka

WESTGROVE PRIMARY SCHOOL NEWSLETTER

Thames Boulevard, Werribee 3030
 Email: westgrove.ps@education.vic.gov.au
 Phone: (03) 9749 8233

2023 Annual Implementation Plan (AIP) Goals

This year our school goals are centred around Mathematics, School-Wide Positive Behaviours and Attendance. Throughout this year we will be improving our consistency and practice in these by continuing and building on the work we started last year. In the first instance, we remind families of the importance of your child's attendance and notifying the school via Compass if your child is absent. Congratulations to 4W for obtaining the Attendance Cup for the first week of this term!



Student Leaders

SCHOOL CAPTAINS



Juanisha



Claude

SCHOOL VICE CAPTAINS



Amy



Wisdom



Shumough

HOUSE TEAM LEADERS

WERRIBEE



Mckenzie



Alexander

MURRAY



Julia



Evelyn-Rose

BARWON



Matilda



Lexia

YARRA



Braxton



Ahmad

Congratulations to our student leadership team for 2023, We are excited about the contributions that they will make to Westgrove in 2023 as representatives of the student body and how these roles will evolve throughout the year.

Staying Connected

Keeping parents informed about the happenings around school is very important to us as we believe it helps strengthen the partnership between home and school. We have a number of ways in which we send important information in the hope that all parents and carers can access it in some form. The two main forms

we use are Compass and Class

Dojo. On occasion, we will send you information via email or post information on our Facebook page. Please ensure that you are connected to both Compass and Class Dojo. If you are having any difficulties accessing either platform please contact your child's teacher or the office.



Westgrove Primary School is a safe, inclusive and supportive community that empowers our students with the tools to reach their individual potential.

RESPECT • EMPATHY • HONESTY • PERSEVERANCE • INCLUSIVITY • RESILIENCE • COLLABORATION

*Wominjeka*

WESTGROVE PRIMARY SCHOOL NEWSLETTER

Thames Boulevard, Werribee 3030
Email: westgrove.ps@education.vic.gov.au
Phone: (03) 9749 8233

School Council Elections

On Tuesday information was posted on Class Dojo and Compass regarding our 2023 School Council Elections. In summary, we have the following vacancies:

- 3 x Parent category vacancies
- 2 x Staff (DET employee) category vacancies

Please note: If the number of nominations exceed the vacancies, we will have a community ballot.

Nomination forms are available at the office from Tuesday 7th February and must be returned to the office by 4pm Friday 17th February. Members up for re-election can re-nominate.

Please refer to the Class Dojo and Compass posts for further information or contact the office on 9749 8233.

Family Picnic

Thank you to all the families who attended our Family Picnic on Tuesday. It was great to see the school yard buzzing and the community connecting and the children having fun socialising with their friends and staff. We hope that our families had the opportunity to forge new connections within the community and familiarise themselves with some of our staff.

Student Safety

Student safety at Westgrove Primary is our highest priority and the safe and appropriate supervision of students is an important element of our duty of care to students. Part of this duty is ensuring parents and students are aware of our student supervision arrangements before and after school.

Before school: School grounds are supervised from 8.45am

After school: School grounds are supervised until 3.30pm

Students on school grounds outside these times will not be supervised (unless they are attending a supervised extracurricular activity).

Parents/carers are requested to ensure that students do not attend school outside of these supervised times unless they are attending a pre-arranged supervised activity (i.e. sports practice).

Families are encouraged to contact Quantin Binnah Community Centre for more information about the before and after school care facilities available to our school community.

For a copy of our school's Yard Duty and Supervision Policy please refer to the policy section on our website or contact the school office for a copy. This policy includes Westgrove Primary's student supervision arrangements across the school day, including before and after school.

Annual privacy reminder for our school community

Our school collects, uses, discloses and stores student and parent personal information for standard school functions or where permitted by law, as stated in the [Schools' Privacy Policy](#).

Please take time to read our school's collection notice, found on our website [WPS Privacy Collection Statement](#).

For more information about privacy, refer to: [Schools' Privacy Policy — information for parents](#). This information is also available in ten community languages (Amharic, Arabic, Dari, Gujarati, Mandarin, Somali, Sudanese, Turkish, Urdu and Vietnamese).

Westgrove Primary School is a safe, inclusive and supportive community that empowers our students with the tools to reach their individual potential.



Wominjeka

WESTGROVE PRIMARY SCHOOL NEWSLETTER

Thames Boulevard, Werribee 3030
 Email: westgrove.ps@education.vic.gov.au
 Phone: (03) 9749 8233

TEACHING AND LEARNING UPDATE

LITERACY AT WESTGROVE

HOW TO

TOP TIPS FOR HOME READING

1. Prioritise reading time - set aside a regular reading time.
2. Discuss what the book may be about before you start. Take your time and reread books your child loves
3. Point out spelling patterns in words like cat and pin
4. Help your child understand that reading requires effort. Praise your child on any efforts and attempts made. Always be positive.

NUMERACY AT WESTGROVE

Advice From MATHS Expert Jo Boaler

4 MATHS TIPS FOR PARENTS AND CARERS

1

Encourage children to play maths puzzles and games. Anything with a dice helps them enjoy maths, and develops number sense, which is critically important.

2

Always encourage and never tell kids they are wrong when they are working on maths problems. Instead, find the logic in their thinking – there is always some logic to what they say. E.g. if your child multiplies 3 by 4 and gets 7, say – Oh I see what you are thinking, you are using addition to add 3 and 4, when we multiply we have 4 groups of 3...

3

Never associate maths with speed. It is not important to work quickly, and forcing kids to work quickly on maths is the best way to start maths anxiety for children, especially girls. Don't use flashcards or other speed drills.

4

Never share with your children the idea that you were bad at maths at school or you dislike it – especially if you are a mother. Researchers found that as soon as mothers shared that idea with their daughters, their daughter's achievement went down. Everybody is able to use Maths!

ENGAGEMENT AND WELLBEING UPDATE

STUDENT ATTENDANCE

Going to school every day is the single most important part of your child's education. Students learn new things at school every day – missing school puts them behind.

Parents and carers play a huge role in helping ensure that every student at Westgrove PS makes every day count. Parents/carers are legally responsible for making sure their child goes to school every day.

If your child is sick or absent, you are required to notify their school as soon as possible **on the day of absence** using one of the following methods:

1. **Online:** log the absence directly using Compass.
2. **Telephone:** the school office on **9749 8233** and let the staff know your child's name, class, date of absences and reason.
3. **Email:** the school and provide the staff with your child's name, class, date of absences and reason.

Notifying the school of your child's absence either prior to, or on the day that they will be away, helps ensure the safety and wellbeing of children and will fulfil your legal responsibility.

Westgrove Primary School is a safe, inclusive and supportive community that empowers our students with the tools to reach their individual potential.

RESPECT • EMPATHY • HONESTY • PERSEVERANCE • INCLUSIVITY • RESILIENCE • COLLABORATION



Wominjeka

WESTGROVE PRIMARY SCHOOL NEWSLETTER

Thames Boulevard, Werribee 3030
 Email: westgrove.ps@education.vic.gov.au
 Phone: (03) 9749 8233



OFFICE NEWS

CSEF – CAMPS SPORTS AND EXCURSION FUND

We are currently accepting applications for CSEF

School camps provide children with inspiring experiences in the great outdoors. Excursions encourage a deeper understanding of how the world works while sports teach teamwork, discipline and leadership. All are a part of a healthy curriculum.

CSEF is provided by the Victorian Government to assist eligible families to cover the costs of school trips, camps and sporting activities.

If you hold a valid means-tested concession card or are a temporary foster parent, you may be eligible for CSEF. A special consideration category also exists for asylum seeker and refugee families. The allowance is paid to the school to use towards expenses relating to camps, excursions or sporting activities for the benefit of your child.

New applicants should contact the school office to obtain a CSEF application form or download from the website below.

If you applied for CSEF at your child's school last year, you do not need to complete an application form this year unless there has been a change in your family circumstances.

You only need to complete an application form if any of the following changes have occurred:

- **new student enrolments;** your child has started or changed schools this year.
- **changed family circumstances;** such as a change of custody, change of name, concession card number, or new siblings commencing this year.

Check with the school office if you are unsure.

Westgrove Primary School is a safe, inclusive and supportive community that empowers our students with the tools to reach their individual potential.



Wominjeka

WESTGROVE PRIMARY SCHOOL NEWSLETTER

Thames Boulevard, Werribee 3030
Email: westgrove.ps@education.vic.gov.au
Phone: (03) 9749 8233

DANCE CLASSES HELD IN SCHOOL GYM

CLASSES HELD IN:

***TAP * JAZZ/FUNK * BALLET AND ACROBATICS
FOR BOYS AND GIRLS FROM 3YRS TO ADULTS IN A FUN
AND FRIENDLY ENVIROMENT**

WE ARE NOW TAKING ENROLMENTS FOR TERM 1

AFFORDABLE PRICES

NO TERM FEES OR COSTUME MAKING

**FIRST LESSON HALF PRICE FOR ALL NEW ENROLMENTS
FROM WESTGROVE PRIMARY**

DANCHELLE

DANCE

SCHOOL OF



D.S.O.D

FOR ALL ENQUIRIES OR ENROLMENTS

PHONE : 0438 699 125 OR MESSAGE OUR PAGE

